

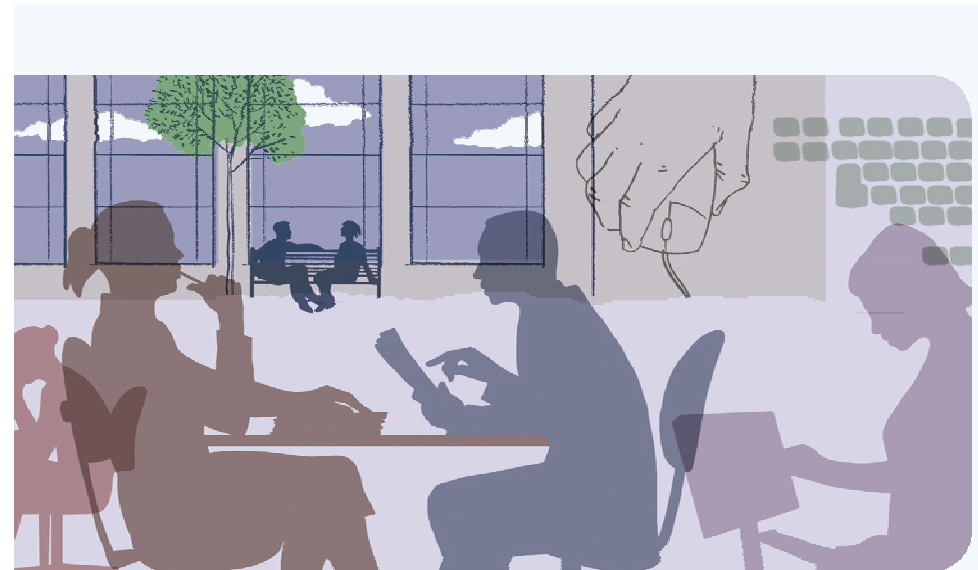
Healthcare Library  
Prospect Park Hospital  
Honey End Lane  
Reading RG30 4EJ

Monday – Friday 9.00-5.00

Tel: 0118 960 5012  
Fax: 0118 960 5014

Email: [Library.Healthcare@berkshire.nhs.uk](mailto:Library.Healthcare@berkshire.nhs.uk)

Website: [www.berkshire.nhs.uk/libraries](http://www.berkshire.nhs.uk/libraries)



## Healthcare Library

### Guide to services

---

Every effort is made to ensure that information provided by the Library is accurate, up-to-date and complete. However, it is possible that it may not be representative of the whole body of evidence available and both printed and internet resources may contain errors or out-of-date information.

No responsibility can be accepted by the Library or Berkshire Shared Services for any action taken on the basis of information it has provided.



Hosted by  
Berkshire Healthcare  
NHS Foundation Trust

Version 1 Jan 2008

**How do I join the Library?** The Library is primarily for the use of staff employed by or working with BHFT and Berkshire West PCT, plus students on placement with these Trusts. Membership is also available to NHS staff from the South Central area and other professionals may be granted access subject to approval and payment of a fee. The easiest way to join is via the website.

**How can I find the Library website?** The address is - [www.berkshire.nhs.uk/libraries](http://www.berkshire.nhs.uk/libraries)

**Who can help with my enquiry?** The Librarians are professionally qualified and trained to deal with enquiries from the very basic through to complex literature searches.

**What if I can't visit the library?** You can communicate via phone, email or the website and we can send books and articles to you in the internal post.

**Do you provide any training?** The Library offers library inductions plus one to one training in database searching. 'Finding the Evidence Workshops' and 'Health on the Internet courses' are held regularly.

**What about books?** The Library has over 8,000 titles covering mental and public health, primary care, nursing and allied health.

**How many journals does the library have?** The Library subscribes to over 150 titles — a full list can be found on our website. They may not be borrowed but articles can be photocopied in the Library.

**How do I find a book or journal?** The Library catalogue can be searched via our website and lists all the books and journals including material held at our satellite libraries at the **Berkshire Adolescent Unit** (child and adolescent mental health) and **Duchess of Kent** (palliative care). You can also reserve and renew books via the website.

**What if I need a book or article not held by the library?**

The Library can obtain books and articles from other libraries. There is no charge for this service with the exception of British Library requests for which there is a minimal charge. But do check and see if it is available electronically first ...

**What is available electronically?** There are collections of electronic journals and books and access is also provided to the key medical and health databases. These (and many other resources) can be accessed via [www.library.nhs.uk](http://www.library.nhs.uk) and guides on how to use these resources can be found on the library website.

**How do I get an Athens username?** You can register via [www.library.nhs.uk](http://www.library.nhs.uk) and if you do this from a computer on the NHS network you will immediately be given a username. Once you have got an Athens username it can be used from either work or home.

**How can I easily keep up-to-date in my area of interest?** The Library can provide ongoing literature searches, lists of new books and runs email interest groups.

**Do you have computers I can use?** There are four computers with access to the Internet and Microsoft Office in the Library - you will need a 'Berknet' user name and password to use them.

**Can I use the Library outside normal opening hours?** 24/7 access can be arranged please contact the Library Manager for more information.

**Can I use any other NHS libraries in Berkshire?** You may also use the libraries at the Royal Berkshire, Wexham Park or Heatherwood Hospitals. More information can be found via the Library website.